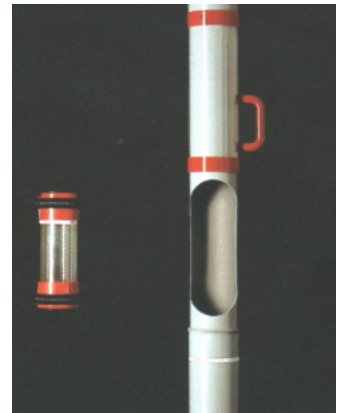
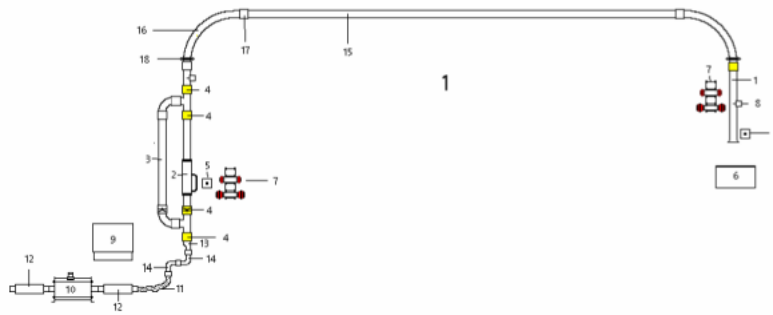


System Description AC 2U



Maximum numbers of stations

2

Maximum numbers of lines

1

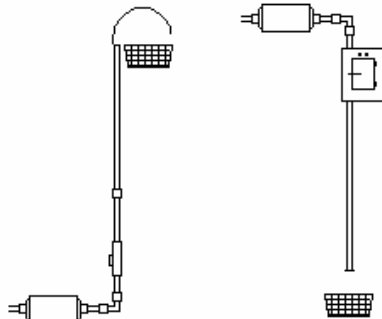
Diverter

2-way

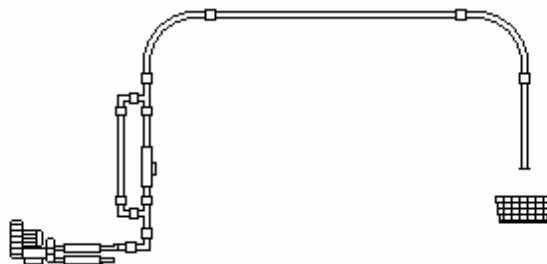
Operation mode

Single zone two-way system or Double tube bi-directional operation

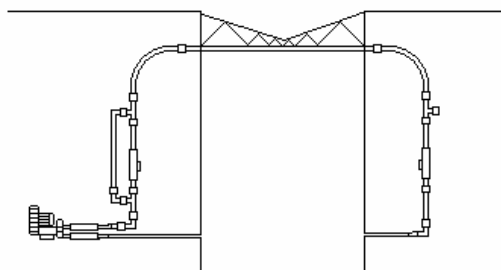
Examples of installation:



Simple gravity principle, in which a carrier only drops down due to its own weight and is transported upwards by means of pressure or suction.



Two-point-connection with slide station at blower side and open end. The tube at the open end can approach from above, below or horizontally.



Two-point-connection with slide stations at blower side and the opposite end. Tube is installed between two buildings as an open air line. To prevent condensation, both system ends have to be equipped with fresh-air-connection.

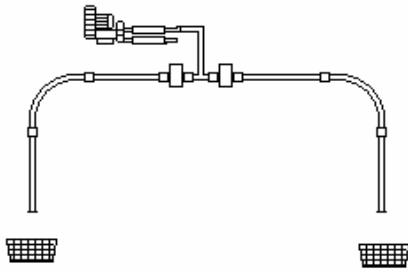
aerocom

Aerocom Systems, Inc.
5322 Rafe Banks Dr. Ste B
Flowery Branch, Georgia 30542

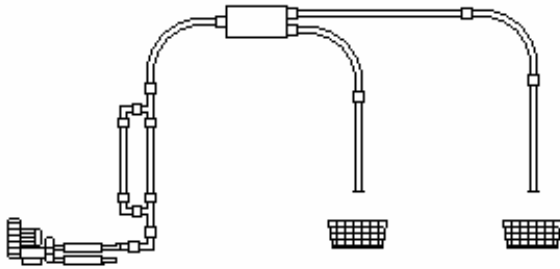
Phone (678) 513-9660
Fax (770) 965-8456

info@aerocomusa.com
www.aerocomusa.com

Systemdescription AC 2U



This Two-point-system is designed for the connection of two open ends.
The air supply is connected somewhere in the middle of the system (Middle-air-connection).



Two-point-connection with a two-way-diverter. The tube at the stations after diverter can approach from above, below or horizontally.

Range of use of the different station types:

Station-types	Tube Diameter									
	AD 63	NW 75	NW 90	NW 100	AD 110	NW 124	AD 160	AD 200	AD 315	
OE	✓	✓	✓	✓	✓	✓				
Slide station	✓	✓	✓	✓	✓	✓	✓	✓	✓	
Slide station FU	✓	✓	✓	✓	✓	✓	✓	✓		
Door station	✓	✓	✓	✓	✓					
KSA							✓	✓		✓
Receiver from below	✓		✓	✓	✓	✓	✓			
Guide rail	✓		✓		✓		✓			
EH 1	✓	✓	✓	✓	✓	✓	✓	✓		
Receiving flap	✓		✓		✓		✓			
Receiving shoe straight					✓					
Receiving shoe bended					✓					

Features
The central control unit is built-in into a steel case.
Rated voltage: 115VAC or 230VAC, 50/60Hz.
Microprocessor controlled, printer connection (pin writer) or PC-monitored with program AEROTERM or HYPERTERM.
Suitable for single- or multi-carrier-operation.
Blower relay for single-phase-blower built-in, blower-on at zero-axis crossing. 3-phase blower controlled via blower relay.
Power pack for stabilised voltage built-in, short-circuit proof outputs and inports.
Power cables terminated with screw-connectors, pluggable. Control cables terminated with Panduit connectors.
Alarm relay with dry contact for system failure. Opto-coupler inport, e.g. for fire alarm.
Operation panel at the CCU with 2 off 7-segment indicators for system ready-busy, despatch from-to, faults (the last 16 faults can be displayed), clearing, reset, sending counter, programming mode.
Arrival signals with cancellation key, for the indication of arrived carriers can be connected to each station. In addition a remote visible and/or audible signal can be installed.
Diverter or 2 off slidegates allow the blower to be anywhere in the middle (see above examples D or E)

aerocom

Aerocom Systems, Inc.
5322 Rafe Banks Drv. Ste. B
Flowery Branch, Georgia 30542

Phone (678) 513-9660
Fax (770) 965-8456

info@aerocomusa.com
www.aerocomusa.com