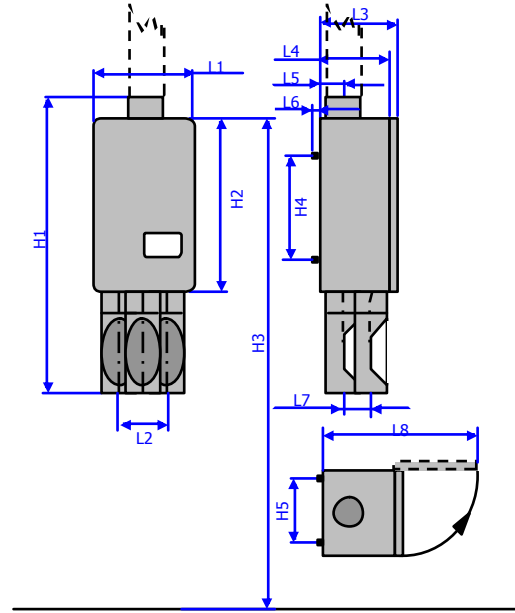


Multi Load Station - AC 1000 / 3000

- 4
- 6
- 8



	L1	L2	L3	L4	L5	L6	L7	L8	H1	H2	H3	H4	H5
OD 4	12 1/4	6 5/8	10 3/4	9 1/2	3 3/8	9/16	3 3/8	21 7/8	43	25 9/16	59	15 3/8	10
OD 6	19 5/8	10 1/4	16 3/4	15 1/2	5 1/2	9/16	5 1/8	35 1/4	55 5/16	35 7/16	72 7/8	29 1/2	18 1/8
OD 8	23 3/4	13	24 7/8	23 3/4	11 7/8	3/16	6 1/2	47 5/16	71 7/16	46 5/8	78 3/4	34 7/8	20 7/16

Use:

The Multi load station is basically used as a sending station for 3 carriers. Several storage units can be arranged side by side. The dispatch tube must be connected from top.

Send:

The multi load station sends stored carriers automatically to the desired destinations.

Receive:

For receiving it is recommended to use a separate station (for example OE or EWS)

Easy of use:

	AC 1000	AC 3000
• Three open storages for automatic departure. Carriers can be stored at any time, independent of the state of operation of the system !	√	√
• A carrier can be stored at any time, independent of the state of operation of the system!	Anytime	Anytime
• Display indicates the destination numbers (2-4 digits)	√	√
• Display indicates users and special functions in clear text (2-lines, each 24-digits)		√
• By a scroll function of the station-keyboard all users can easily be found.		√
• The ergonomically designed station-keyboard is protected against dust and dirt by a telephone-type membrane key pad	√	√
• 3 LEDs in the operation panel show the state of operation	√	√
• Number of arrival signals, this means that several users have access to the station, each of them gets its own signal	5	16
AC 1000: On demand the number of arrival signals can be extended up to 10.	√	
• Several destination numbers can be assigned to one signal and several signals can be assigned to one destination. (Software-controlled).	√	√
• Follow me function in case of absence, also temporary available		√
• Special functions, like priority or slow transport can be assigned either to the station or to the destination number		√
• Repetition control for several carriers to the same destination	√	√
• Destination numbers up to 5-digits	2 to 4	2 to 5

Technology:

- An integrated service switch allows extensive function tests at the station; direct feed back in the display
- Slide gate with T-piece above the station required

Multi Load Station - AC 1000 / 3000



← Operating unit
AC 1000

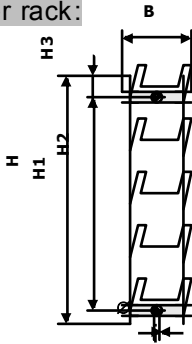


Operating unit
AC 3000 →

Quality:

- Driven by a noiseless transmittal, maintenance-free cog belt, through this the S-tube can be exactly adjusted
- Steel box with swivel door, made of Polystyron , colour RAL 7035
- Proximity switches
- Electronically, software-controlled motor driver
- Industrial grade, heavy duty motor
- Rotation by roller bearings
- Maintenance-free Teflon®-Sealrings Fully-electronic, maintenance-free microprocessor controls
- Integrated in the swivel door are operation panel, keyboard, display and electronic controls
- Fully-electronic, maintenance-free microprocessor controls

Accessories: Carrier rack:



Art.No.		Ø	B	H	H1	H3	
290 091	Lacquered	1/4	5 5/8	22 5/8	19 1/16	2 3/4	inch.
290 092	chromed						